

# Shout Joyfully to God, All the Earth

by Travis Ham

## Verses

♩ = 144



1. Come and see the works of God, awe - some in His deeds.  
2. Come in reve - rence, come and hear God has heard our cry



Lead - ing out a res - cue on dry land through the sea.  
In our place, the Lamb was slain: the fi - nal Sac - ri - fice.

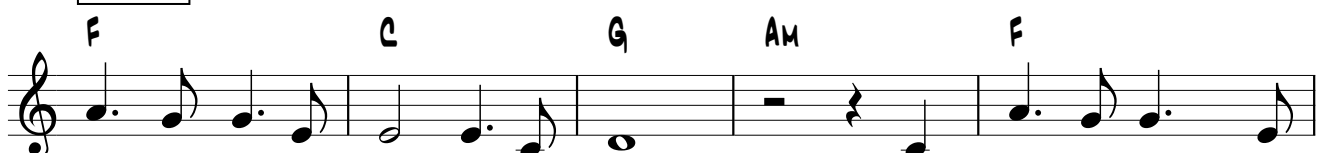


Come let us re - joice in Him, Who made a way back home.  
God will nev - er turn a - way His love from souls who trust The

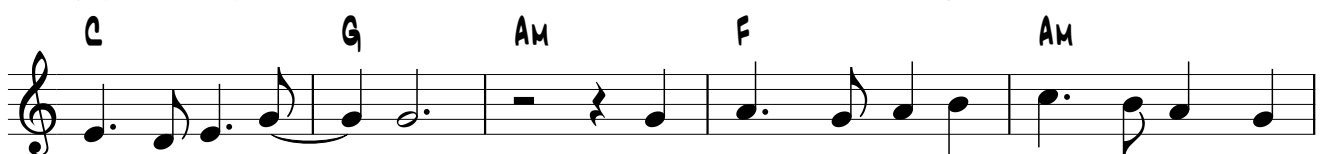


Hum - bly praise the Lamb up - on the throne. Shout  
ris - en Lamb who's com - ing back for us.

## Chorus



joy - ful - ly to God all the earth! Sing loud His match - less



glo - ry and His works! The great - ness of His pow - er draws us



all to lift His praise, 'til all the earth will wor - ship Je - sus' name.

Bridge

Sing, oh Church. Bless our ho - ly God. We are  
whol - ly His, by His kind - ness bought.

AM F  
C G

Detailed description: The image shows a musical score for a bridge section. It consists of two staves of music. The first staff begins with a treble clef, a common time signature (C), and a half rest. This is followed by a double bar line. The melody then consists of a series of quarter notes: G4, A4, B4, C5, B4, A4, G4. Above the first two notes (G and A) is the chord marking 'AM', and above the third note (B) is the chord marking 'F'. The lyrics 'Sing, oh Church. Bless our ho - ly God. We are' are written below the notes. The second staff begins with a treble clef, a common time signature (C), and a quarter note G4. This is followed by a series of quarter notes: A4, B4, C5, B4, A4, G4. Above the first two notes (G and A) is the chord marking 'C', and above the third note (B) is the chord marking 'G'. The lyrics 'whol - ly His, by His kind - ness bought.' are written below the notes. The piece ends with a double bar line.